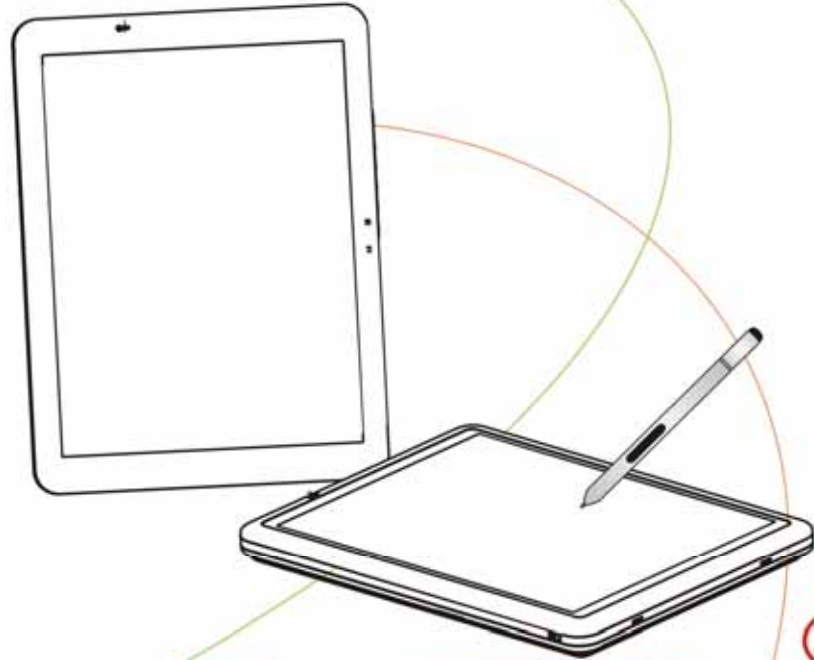


USER'S GUIDE



Preface

©Copyright 2004

All Rights Reserved.

The information in this document is subject to change without prior notice in order to improve reliability, design and function and does not represent a commitment on the part of the manufacturer.

In no event will the manufacturer be liable for direct, indirect, special, incidental, or consequential damages arising out of the use or inability to use the product or documentation, even if advised of the possibility of such damages.

This document contains proprietary information protected by copyright. All rights are reserved. No part of this manual may be reproduced by any mechanical, electronic, or other means in any form without prior written permission of the manufacturer.

Safety Notices

- 1.** Please read these safety instructions carefully.
- 2.** All precautions and warnings on the equipment should be carefully noted.
- 3.** Please disconnect the computer from the AC outlet before cleaning.
- 4.** Never pour any liquids into any openings or directly onto the computer unit. This could result in fire or electrical shock.

-
5. Ensure the voltage range of the power outlet is between 100V and 240V before connecting the computer unit. Exceeding the maximum rated voltage may cause damage to the AC adapter or to the computer. This could result in fire or electrical shock.
 6. Do not leave this equipment in a non-temperature controlled environment; storage temperatures below 4°C (39°F) or above 40°C (104°F) may damage the unit.



To reduce the risk of an electric shock, which could cause personal injury, please follow all safety notices. The symbols shown are used in your documentation and on your equipment to indicate safety hazards.



Lithium batteries can be dangerous. Danger of explosion if battery is incorrectly replaced. Replace only with the same or equivalent type recommended by the manufacturer. Dispose of used batteries according to the manufacturer's instructions.



Under no circumstances should the user attempt to disassemble the power supply. The power supply has no user-replaceable parts. Inside the power supply are hazardous voltages that can cause serious personal injury. A defective power supply must be returned to your dealer.

Safety Notices for the Power Cord

This equipment has a 2 or 3-wire power cord. Replace the power cord if it becomes damaged. Contact your dealer for an exact replacement.

In the U.S.A. and Canada, the power cord must be a UL-listed detachable power cord (in Canada, CSA-certified).

2-wire cord	SPT-2 18AWG
-------------	-------------

3-wire cord	SVT or SJT, 18 AWG, 3-conductor
-------------	---------------------------------

Provide with a molded-on cord connector body at the other end. The cord length must not exceed 3 meters.

Outside the U.S.A. and Canada, the plug must be rated for 250 VAC, 2.5 amp minimum, and must display an international agency approval marking. The cord must be suitable for use in the end-user's country. Consult your dealer or the local electrical authorities if you are unsure of the type of power cord to use in your country. Voltage changes occur automatically in the power supply.

Note-TNV Safety Caution



To reduce the risk of fire, use only No. 26 AWG or larger telecommunication line cord. Avoid using a telephone (other than a cordless type) during an electrical storm. There may be a remote risk of electric shock from lightning. Do not use the telephone to report a gas leak in the vicinity of the leak.

Notice of EMC Compliance

This equipment has been tested and found to comply with the limits for a Class B digital device, pursuant to Part 15 of the FCC Rules. These limits are designed to provide reasonable protection against harmful interference in a residential installation. This equipment generates, uses, and can radiate radio frequency energy and if not installed and used in accordance with the instruction manual may cause harmful interference to radio communications. However, there is no guarantee that interference will not occur in a particular installation. If this equipment does cause harmful interference to radio or television reception, which can be determined by turning the equipment off and on, the user is encouraged to try to correct the interference by one or more of the following measures:

- Reorient or relocate the receiving antenna.
- Increase the separation between the equipment and receiver.

-
- Connect the equipment into an outlet on a circuit different from that to which the receiver is connected.
 - Consult the dealer or an experienced technician for help.

Use only shielded I/O cables to connect I/O devices to this equipment.

You are cautioned the changes or modifications not expressly approved by the party responsible for compliance could void your authority to use the equipment.

Canadian EMI Compliance Statement

This Class B digital apparatus meets all requirements of the Canadian Interference - Causing Equipment Regulations.

European Union CE Marking Declaration

This product has been tested and found to comply with the EMC requirement subject to the EU directive for CE marking.

FCC Statement to Users for the FaxModem

This equipment complies with Part 68 of the FCC rules. On the bottom of this equipment is the label that contains, among other information, the FCC Registration Number and Ringer Equivalence Number for this equipment. IF REQUESTED, THIS INFORMATION MUST BE GIVEN TO THE TELEPHONE COMPANY.

The REN is useful to determine the number of devices you may connect to your telephone line and still have all of those devices ring when your telephone number is called. In most, but not all areas, the sum of the REN's of all devices connected to one line should not exceed five (5.0).

To be certain of the number of devices you may connect to your line, as determined by the REN, you should contact your local telephone company to determine the maximum REN for your calling area.

If your telephone equipment causes harm to the telephone network, the telephone company may disconnect your service temporarily. If possible, they will notify you in advance. But if advance notice isn't practical, you will be informed of your right to file a complaint with the FCC.

Your telephone company may make changes in its facilities, equipment, operations or procedures that could affect the proper functioning of your equipment. If they do, you will be notified in advance to give you an opportunity to maintain uninterrupted telephone service.

The telephone company may ask you to disconnect this equipment from the network until the problem has been corrected or until you are sure that the equipment is not malfunctioning. This equipment may not be used on coin service provided by the telephone company.

The Telephone Consumer Protection Act of 1991 makes it unlawful for any person to use a computer or their electronic device to send any message via a telephone facsimile machine unless such message clearly contains in a margin at the top or bottom of each transmitted page or on the first page of the transmission the following information:

- The date and time of transmission
- Identification of either business, business entity or individual sending the message;
- Telephone number of either the sending machine, business entity or individual.

In order to program this information into your fax/modem, please refer to the appropriate instructions in your fax/modem manual.

Laser Compliance Statement for CD-ROM, DVD-ROM, CD-RW and DVD/CD-RW Combo Drives



The CD-ROM, DVD-ROM, CD-RW and DVD/CD-RW Combo drive for this computer are laser products. The classification label of the drive is located on the bottom of the drive. Below is a sample of the classification label;

CLASS 1 LASER PRODUCT

LASER KLASSE 1

LOUKAN 1 LASERLAITE

APPAREIL A LASER DE CLASSE 1

KLASS 1 LASER APPARAT

The drive is certified in the USA to comply with the requirements of the Department of Health and Human Services 21 Code of Federal Regulations (DHHS 21 CFR) Subchapter J. for Class 1 laser products.

In other countries the drive is certified to comply with the requirements of EN60825.



Do not open the drive. There are no user-serviceable parts or components inside. Use of controls, adjustments and operation of procedures other than those specified, may result in hazardous exposure to radiation. Class I (1) laser products are not considered hazardous. The drive has an internal, Class I (1), 0.5-milliwatt, aluminum gallium-arsenide laser that operates at a wavelength of 760 to 810 nanometers. The design of the laser system and the drive ensures that there is no exposure to laser radiation above a Class I (1) level during normal operation, user maintenance or servicing.

Table of Contents

Chapter 1: Before You Start 1

 Important Things to Remember Before Working on Your
 Computer2

Chapter 2: Introduction 5

 Introducing your Computer.....6

 Unpacking the Computer6

 Getting to Know Your Computer.....7

Chapter 3: Getting Started 15

 Setting Up the Computer 16

 Inserting and Removing the Battery Pack..... 16

 Operating on Battery Power..... 19

Chapter 4: Using the Computer 21

 Adjusting the Screen Display.....22

 CF Cards and Expansion Sockets23

 The Battery Power System.....23

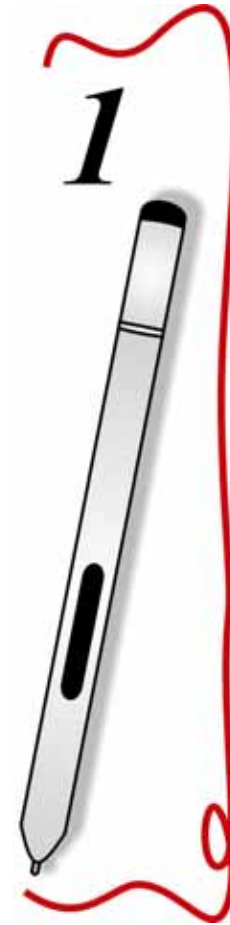
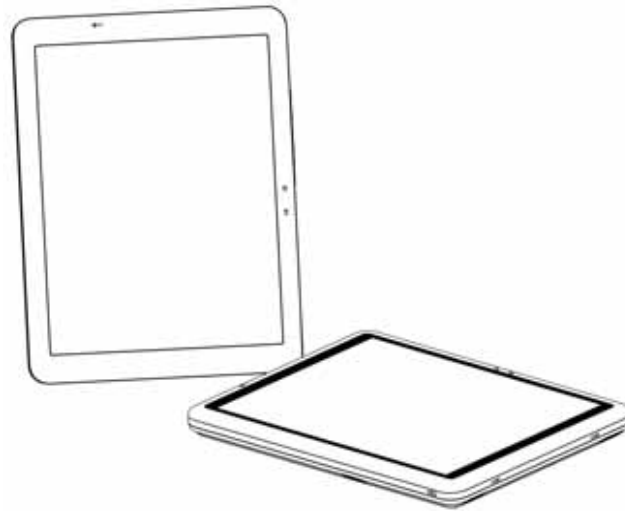
 Using the A-Menu27

 Entering Information with the Pen.....28

 Rotating your Display30

Using the OnScreen Keypad.....	31
<i>Chapter 5: Performing Desktop Operations on Your Computer</i>	33
Audio	34
Connecting Peripheral Devices.....	35
<i>Chapter 6: Software Utilities.....</i>	37
Recovery CD Installation.....	38
Using the Support CD.....	40
Utilities	44
<i>Chapter 7: Troubleshooting.....</i>	63
General Hardware Problems/Possible Cause and Solution	64
Contacting Your Dealer	68
<i>Chapter 8: How do I Expand my Computer?</i>	69
How to upgrade your RAM module.....	70
Easy to Upgrade HDD Module	71
<i>Appendix A: Specifications</i>	75
Detailed Specifications	76

Before You Start



 **USER'S INFO**

This manual will help you get the most from your computer. If you are a less experienced user, you should read through the manual carefully before using your computer.

Important Things to Remember Before Working on Your Computer

Let your Computer acclimatize itself

Rapid changes in temperature such as those from the cold outdoors to a warm office would not be suitable for your system.



Do not power up your system immediately if it has been exposed to hot or cold conditions. Instead, allow the system to adjust gradually to room temperature over a three to four hour period.

Placement of your Computer

Choose a suitable place for your system that's not too hot, too cold, too dark, or too bright. Glare can make it difficult to read the screen.

- Allow sufficient air circulation around the computer when you are working indoors
- Try to keep the system components from being destroyed if it is over heated
- Do not block the ventilation opening

-
- Do not place your computer in direct sunlight

Suitable place to work

Your computer will run well under most conditions but avoid extreme temperatures and humidity levels.

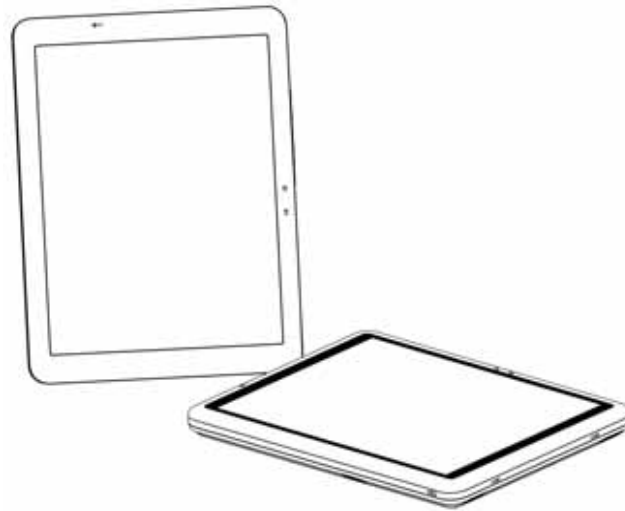
There are some things you can tolerate that the computer can't – things like static electricity, dust, water, steam and oil.



A lithium-ion battery pack is included for those who are frequent travelers. When you are running your computer on battery power for the first time, remove the battery from the package, install it into the system and recharge the battery to fully prepare for service.

Intentionally Left Blank

Introduction



Introducing your Computer

Your computer features the latest advances in portable computing technology. The computer modular design provides maximum expandability without compromising portability. One CF card slot gives you the ability to use standard CF cards or memory cards.

Unpacking the Computer

The computer comes securely packaged in a shipping carton. Please contact your dealer if you find that anything is missing or damaged after examining the contents. The shipping carton should contain the following items:

- Power cord
- Support CD
- Carrying bag
- User's manual, Recover CDs
- Battery Pack
- Stand (Optional)
- AC/DC adapter

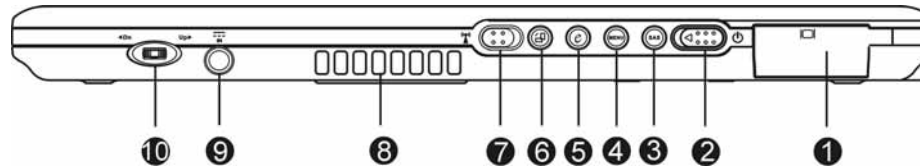
Do not throw the packaging materials away. You may need them later if you have to ship the computer.



Because of different configurations, some of the features mentioned in this manual might not be included on your computer or may differ slightly.

Getting to Know Your Computer

The Front View



1. External CRT Port

This port allows you to easily connect an external display monitor into your computer using the 15-pin female connector.

2. Power Switch

Slide and release the power switch for 1 to 2 seconds will turn on the computer (the LED will lit to indicate its present status). You can also slide this switch to resume normal status when the computer is in suspend mode.



In case your computer crash, we recommend you to slide and release the power switch for 4 to 6 seconds will force the system to shutdown.

3. Secure Attention Sequence(SAS)

A computer without an attached keyboard must support an SAS

hardware mechanism to generate the SAS which also known as “CTRL-ALT-DEL” or “CAD”.

4. *Menu Button*

Use this key to enable the A-Menu display function

5. *Internet Explorer Button*

Use this key to open the Internet Explorer.

6. *Rotate Button*

Use this function to switch your screen display between portrait or landscape orientation.

7. *Wireless Switch*

Use this switch to turn off the wireless function of your system.

8. *Ventilation Opening*

Please do not block this opening when the system is in operation.

9. *DC IN Jack*

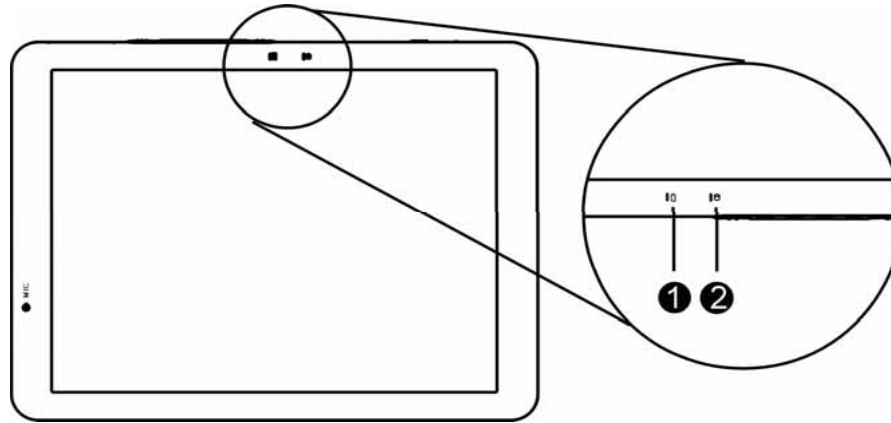
Plug the AC adapter into this jack.

10. *Jog dial*

Functions like enter, up and down arrow keys on a standard keyboard.

- Press inward to enter.
- Rotate upward to scroll up.
- Rotate downward to scroll down.

LED Indicator



1. Battery Charge

This indicator will light up when the battery is charging. It also indicates when the computer enters suspend mode.



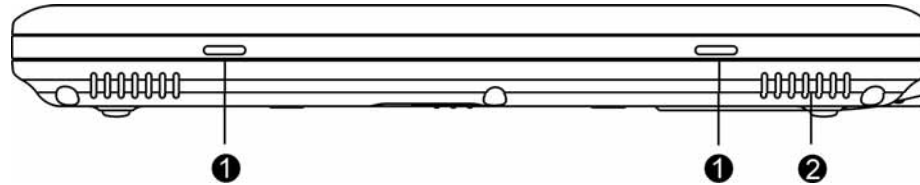
Under suspend mode, the power LED will start blinking while the battery LED will stay lighted. The Battery LED is orange while the battery pack is charging. When the battery pack is fully charged, the Battery LED will turn green.

For more detailed information, please refer to “The Battery Power System” in Chapter 4.

2. HDD LED

Indicate that the computer is accessing the hard disk drive.

The Left View



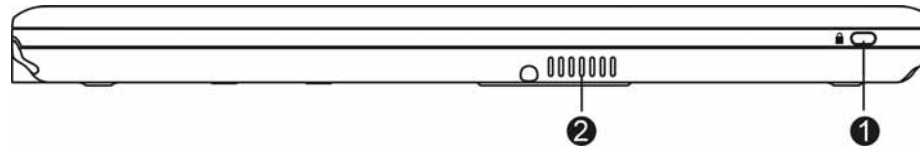
1. Port Replicator Stand Supporter

Connect these two holes into the Docking Station that will serve as supporter for the system.

2. Speaker

This will serve as sound output for the system.

The Rear View



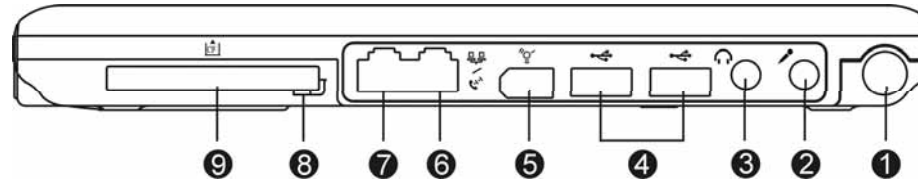
1. Kensington Lock

Allow you to connect a special computer lock to secure your computer. You can purchase a lock at most computer retailers.

2. *Speaker*

This will serve as sound output for the system.

The Right View



1. *Pen Holder*

Secure the pen to the system.

2. *Microphone Input*

This jack is used to input stereo sound from other devices, such as a radio or tape recorder, into your computer.

3. *Audio Line Out*

You can plug in an external speaker or headphone, or connect the line out jack to an audio device such as a cassette recorder to record the computer's audio output.

4. *USB Port*

Your computer includes two Universal Serial Bus (USB) 2.0 ports. USB2.0 is the latest development in Plug and Play technology.

5. **IEEE 1394 Port**

A fast external bus standard that supports data transfer rates of up to 400 Mbps (400 million bits per second) can be used to connect up to 63 external devices. Also supports isochronous *data* -- delivering data at a guaranteed rate.

This makes it ideal for devices that need to transfer high levels of data in real-time, such as video devices. Also supports both Plug-and-Play and hot plugging, and provides power to peripheral devices.

6. **Modem**

This jack connects to an internal 56K voice/fax/data modem. Connect your computer to your phone line through this port.

7. **LAN**

This jack provides a standard RJ-45 connection to an existing network or a high-speed (DSL or cable) connection via a network cable.



When using a LAN, please use an EMI Shielding Cable to minimize interference when transmitting.

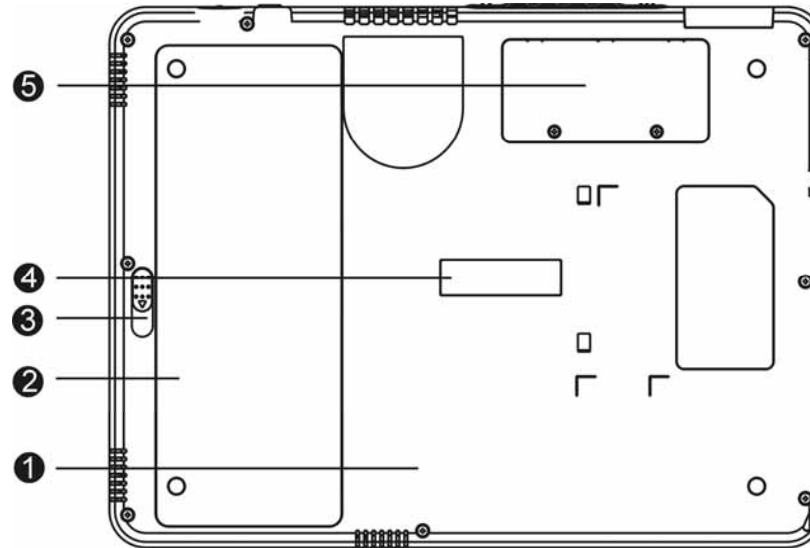
8. **CF Card Eject Button**

Eject an optional CF Card from the CF Card slot.

9. CF Card Slot

Support an optional Type I or Type II CF card or memory Card.

The Bottom Panel



1. HDD Compartment

Your computer includes a 2.5-inch IDE hard disk drive (9.5mm in height).



For upgrading, please refer to Chapter 8 on "How do I Expand my computer".

2. Battery

Your computer comes equipped with a factory-installed battery pack module. After the battery runs down, the module can be removed and replaced with a charged battery.

3. Battery Release Latch

Use this latch to release the battery from its bay.

4. Port Replicator Connector (Optional)

Connect the optional Port Replicator to the 100-pin Port Replicator connector. The Port Replicator further enhances your computer's portability by making it easy for you to connect and disconnect peripheral devices to your computer.

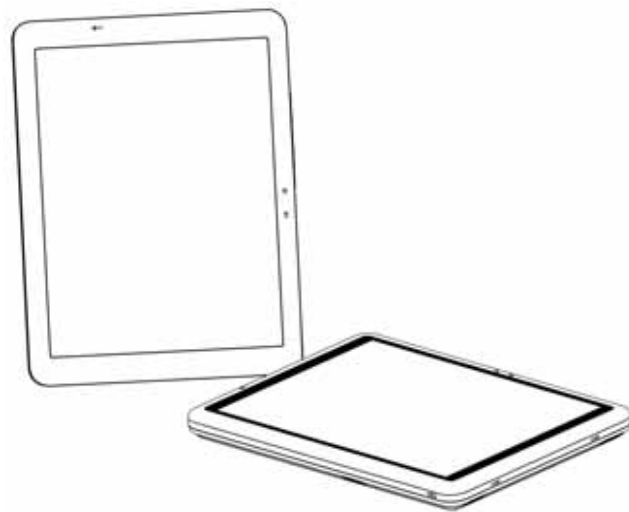
5. RAM Module Compartment

This compartment will allow for upgrading your system DDR-RAM.



For upgrading, please refer to Chapter 8 on "How do I Expand my computer".

Getting Started



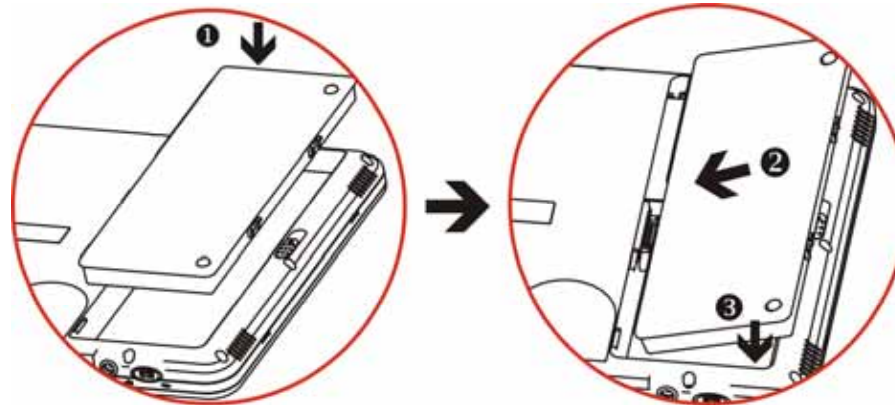
Setting Up the Computer

- Remove the computer from its package.
- Insert the battery pack into the computer so the pack can start charging. (Please refer to the “Inserting and Removing the Battery Pack” section.)
- Connect the computer to an external power source. Turn on the computer.

Inserting and Removing the Battery Pack

Inserting the Battery Pack

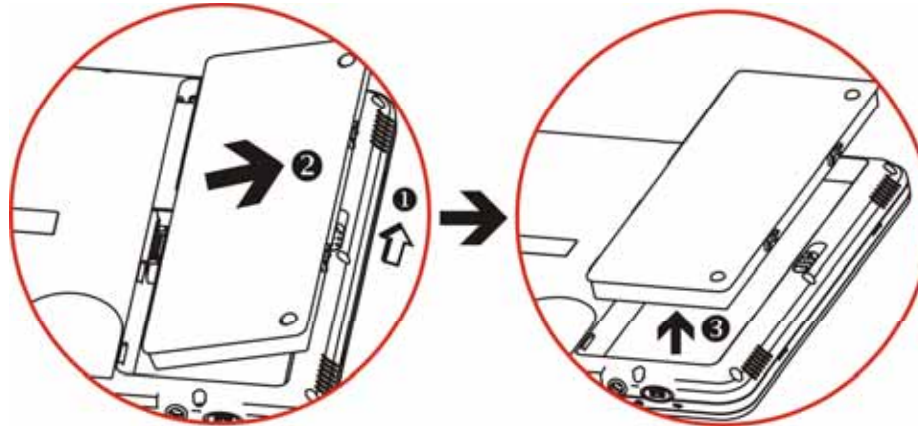
- Turn over the computer and place it on a solid, flat surface.
- Align the battery into the battery compartment (1).
- Place the battery into the bay at a slight angle of 45 degree as illustrated in (2).



-
- The front edge of the battery should slide into the grooves in the battery compartment as indicated in the illustration (3).
 - After it is securely fitted into the grooves, gently lower the battery into the bay until it clicks securely in the bay.

Removing the Battery Pack

- Turn off the computer and disconnect the AC adapter.
- Turn it over and place it on a solid, flat surface.



- Use your thumbs to pull the latch into the direction of the arrow (1) to release the battery from the bay.
- The battery will now be angled slightly out of the bay (2).
- Pull the battery out (3) to completely release from the battery compartment.

Connecting the Computer to an External Power Source

To connect the computer to an external AC power source using the AC adapter:

- Plug the AC adapter cable into the AC power connector on the computer.
- Plug one end of the power cord into an electrical outlet and the other end into the AC adapter.



To prevent damage to your computer, please do not use inferior extension cords. An AC adapter comes with your computer. Never use a different kind of adapter to power the computer or other electrical devices.

Whenever possible, keep the AC adapter plugged into the computer and an electrical outlet to recharge the battery.



Don't try to reset your computer while the hard disk is in use as it may result in the loss or destruction of your data.

Operating on Battery Power

Your computer comes with a rechargeable battery pack that lets you operate the computer without an external power source.

- When the battery pack is fully charged, you can operate the computer for approximately 3.5 hours/40Wh pack under typical condition.

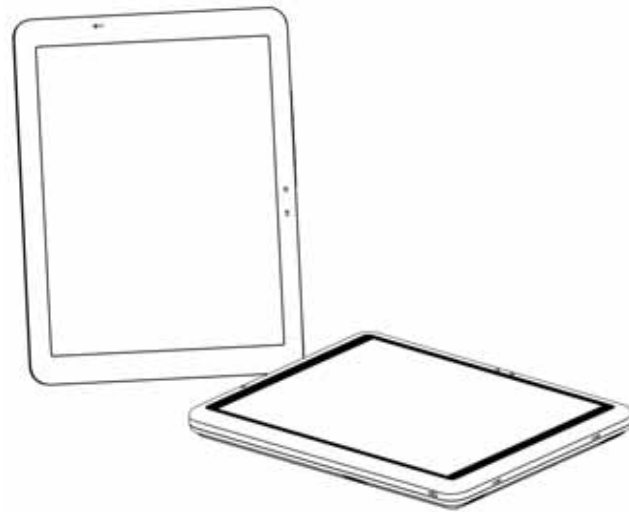
Charging the Battery Pack

The installed battery pack charges automatically whenever the computer is connected to the AC adapter and an external power source.

The first time you use the battery, be sure to fully discharge the battery and recharge it until it is fully charged.

Intentionally Left Blank

Using the Computer



Adjusting the Screen Display

External CRT Display

You can connect an external monitor through the 15-pin CRT connector. Four configurations are available:

- Monitor
- Notebook
- Intel ® Dual Display Clone = Monitor + Notebook
- Extended Desktop = Panel + Extended CRT



Please refer to the “Utilities - VGA Utility” section in Chapter 6.

The Computer’s Hot Key Controls

The computer provides you with special hot keys to execute all the major functions that you like to run on your computer.

- **Power Switch** – Slide this button for 1-2 seconds to power on or enter the suspend/resume mode. Slide this button for more than 4 seconds to power off the system.
- **SAS Button** – Press this button to implement the “Ctrl-Alt-Del” function.
- **Menu Button** - Press this button to implement the “A-Menu” function.
- **Internet Button** - Open Internet Explorer short-cut key

-
- **Rotate Button** - Switch your screen display between portrait and landscape orientations.
 - **Wireless Switch** - Turn the radio on and off.

CF Cards and Expansion Sockets

The computer features one CF expansion socket designed to interface with a Type I or Type II CF card.

Inserting a CF Card

The computer will emit a tone followed by a higher tone when a CF card is inserted. When you eject a card, the computer will emit a high tone followed by a lower tone. Cards can be inserted and removed whether your system is on or off. Follow these instructions to insert a CF card:

- Hold the CF card with the arrow side up and the connector side toward the socket.
- Align the card connectors with the socket and carefully slide it into the socket until it locks into place.

The Battery Power System

Before using the computer on battery power for the first time, disconnect the power adapter and check the battery status icon on the Windows Toolbar to make sure the battery is fully charged.

Removing the Battery Pack

To remove the battery pack from its compartment, please refer to *Chapter 3, "Inserting and Removing the Battery Pack"*.

Preparing the Battery Pack for Use

Before using the battery pack for the first time, the Smart Battery IC within the battery pack should be calibrated in order to get accurate reporting of the remaining battery life status.

To calibrate the battery pack, follow the instructions below:

- Turn the computer off. Connect the AC adapter and let the battery fully recharge. When the battery charge LED turns from orange to green, the battery is fully charged.
- Turn On the computer and let the battery run down until the battery is low-low and you hear continuous warning beeps. The system will automatically enter the Suspend mode. You can now connect the AC adapter.
- The battery pack is now properly calibrated.

In general, using the battery until the low battery warning indicator appears and fully recharging the battery each time (full discharge/charge cycle) will ensure the accuracy of the battery status gauge.

Automatic Battery Pack Charging Function

You can automatically charge the battery pack by using the AC Adapter.



The charge time is almost two hours when the computer power is turned off.

Battery Status

Windows XP has an applet in the Control Panel that will display an icon in the Windows taskbar indicating when the computer is running on battery power or is attached to the AC adapter.



This applet also displays a meter that indicates how much charge is remaining in the battery.

Battery Low Warning

A beeping sound every 1.5 seconds alert you on the “Battery Low” status. When the battery power reaches the “Battery Very Low” status the beeping sound will accelerate.

Your battery now has 1 ~ 2 minutes of battery charge left. You must save your data or connect AC power immediately; otherwise, you may lose your data.

- Beeping accelerates - Battery Very Low: Indicates that there are 1 to 2 minutes of battery charge left. Save your work and turn off the computer or connect the AC adapter.

When there is only one minute of battery charge left, the computer will suspend to the HDD and power off. Connect AC power and resume your work.

Small Battery for the Real Time Clock

There is a small built-in battery pack that supplies power to the system in order to maintain certain system information while the power is off. If the computer is left without a power source for long period of time, this battery will be exhausted and system information will be lost.



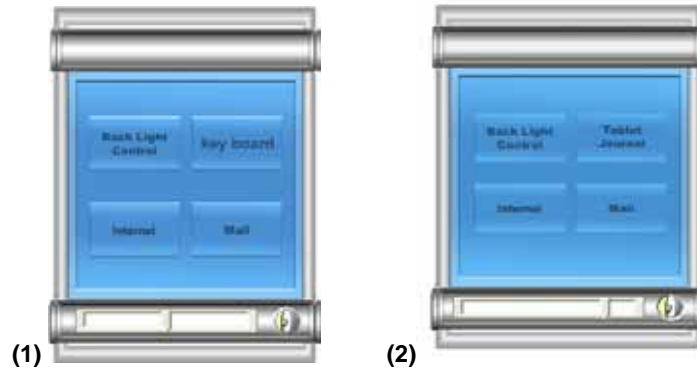
To avoid damage, only use replacement batteries recommended by System provider. To prevent the loss of data when the system loses power, do not remove the battery pack while the power is on.

Using the A-Menu

Press the “Menu” button located on the side of the Tablet PC to display the “A-Menu” window dialog box.



Some of the most popular functions can be accessed from this menu.



- (1) Left graphic is for Windows XP Home Edition/Professional
(2) Right graphic is for Windows XP Tablet PC Edition

Adjusting the Brightness

The brightness can be adjusted using the selection provided by the **A-Menu**. Choose “**Back Light control**” to adjust the brightness of your screen.

Entering Information with the Pen

There are two types of pen available for your system:

- Stylus Pen (For Digitizer System)
- Ordinary Pen (For Touch Panel System)

USER'S INFO

Each pen system is used for different system that depends on which model that you purchased.

Stylus Pen

Hold the pen as if you were writing with a standard pen or pencil. Position your hand on the pen so that you will not accidentally press the pen button.



Identifying the Pen Tip and Pen Button of Stylus Pen



As you monitor the movements of the pen, focus on the pointer on the screen, not on the tip of the pen.

Pen Components

- **Pen tip** - Interacts with the Tablet PC whenever the tip is touching the screen. When tapped on or held over a pen-activated button it activates the button.
- **Pen button** - Functions like the right button on a mouse.
- **Pen Eraser** - Use this eraser to delete information the same way you use the backspace key of your keyboard.


Ordinary Pen



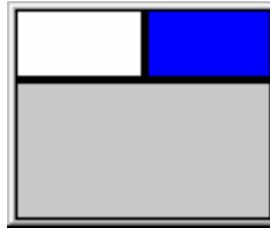
Identifying the Pen Tip of Ordinary Pen

- Hold the pen as if you were writing with a standard pen.
- The pen interacts with the computer whenever the **tip of the pen** touches the screen.

Performing the Functions of a Mouse with the Pen

All you need is to slight tap on the screen with the tip of the pen. If you want to perform the function of the Right Button as you normally do with a Mouse, select the  icon on the tool bar, the “Visual Mouse” window screen will display on the screen.

The top right edge is program as the right button of an ordinary mouse as well as performs the same function.



For TouchScreen Version



NOTE

Please take note that the screen of your computer is very sensitive that with a slight touch of the pen will perform what ever function that you intend to do.


Another special function in providing you with the convenient to work on this computer is the use your index finger to slightly touch the screen will also perform the same function as you would normally use with the pen.

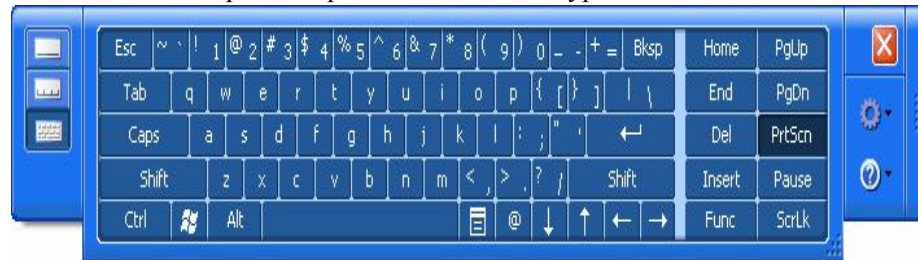
Rotating your Display

Your computer allows you to switch your screen display between portrait and landscape orientation.

- **Rotation button** – You can use this function to rotate your screen into portrait or landscape mode.

Using the OnScreen Keypad

Select the Keyboard via the "Tablet PC Input Panel" icon "" and use the pen to tap on the onscreen keypad.



Windows XP Tablet PC Edition

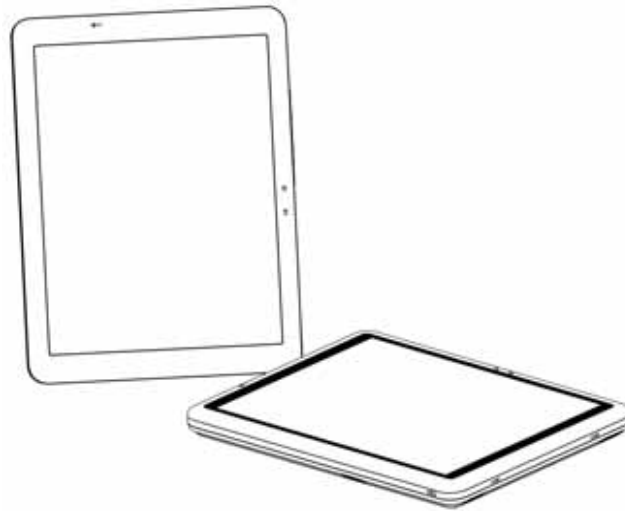
Select the keyboard via A-MENU and use the pen to tap on the onscreen keypad.



Windows XP Home Edition/Professional

Intentionally Left Blank

*Performing Desktop
Operations on Your
Computer*



This chapter will discuss some of the major functions that are typical of a desktop system.

Audio

Multimedia Sound System

Your computer is equipped with internal stereo speakers, a microphone and input audio ports for external audio devices.

Audio Software

Your computer comes equipped with an integrated sound system capable of providing you with quality audio sound through the built-in speakers or through external speakers connected via the system ports.

Audio Volume Control

The volume can be adjusted using the adjustment provided by **A-Menu**. Choose the “**Volume**” control to adjust the volume of the system.

Playing Audio Files

Your computer can play audio files stored in MIDI, WAVE or MP3 file formats. Check the Help and Support Center in Windows for information on the functions of the Media Player.

External Speakers and Microphone

The sound system is capable of providing high-quality sound to external speakers and receiving and of processing sounds from an external microphone or external sound source.

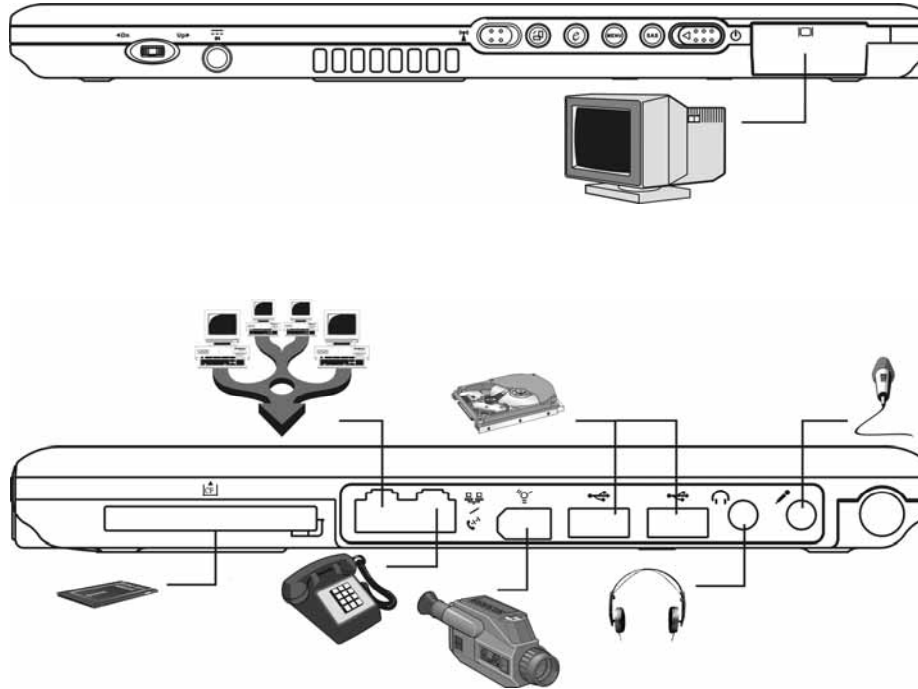
Connecting Peripheral Devices

- **Connecting an External Monitor** - This machine allows you to connect to an external monitor via the VGA port.
- **Connecting USB Devices** - USB devices are Plug & Play; simply plug the USB device into any USB port on the computer to use it. There are some exceptions; the OS will not support some devices.
- **Connecting IEEE 1394 Devices** – IEEE 1394 is a very common transfer interface widely used in many audiovisual devices.

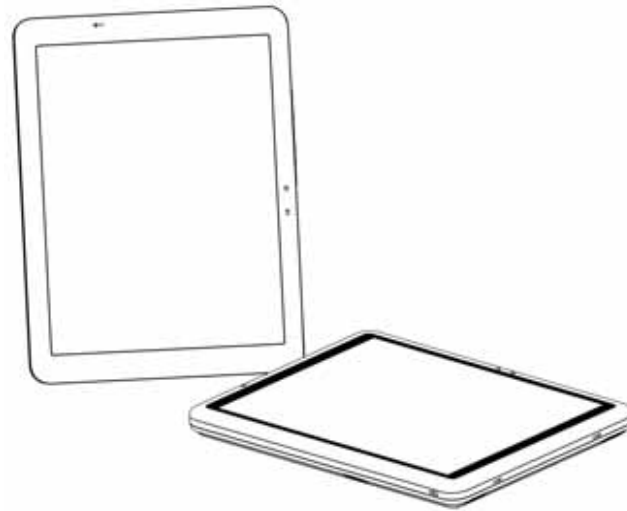
If the OS you use does not recognize the 1394 devices you plan to use, please follow the instructions in the manual to install the proper drivers or software applications to make the devices work.

- **Connecting to a network** - The illustration only shows how to connect the computer to the network. The actual application and setting should be done following the instructions in the OS manual, or you should ask for a technician's professional assistance.
- **Installing the modem** - Use a phone cable to connect the slot on the modem to the phone jack.
The hardware installation is complete. Then follow the instructions from your ISP (Internet Service Provider) to make the proper connection to the Internet.

Connect peripheral devices to the computer's interface ports as shown below:



Software Utilities



6



This chapter deals with installing the drivers and utilities essential to the operation or improvement of some of the computer's subsystems.

Recovery CD Installation

Restoring Software

The Tablet PC includes “Recover CD” that contains all the software shipped and pre-installed or preloaded with simple instructions to restore it.



We recommend you to use the Recover CD to recover your system in case you system crash.

Setting Up Your Hardware

You can insert the “Recover CD” into any external CD-ROM drive whether it is USB or IEEE 1394 based interface.

To navigate on the “Recover CD” software, you can use an optional USB external keyboard or Jog dial.

Using the System Recovery CDs

The “Recover CD” is included in all models to let you restore back to the original factory default setting. This default setting is the software installed in your system before the shipment of the computer.

After the restoration from the “Recover CD”:

- . All settings are set back to the original default settings.
- . All software is factory default.
- . No software, including drivers, applications, and utilities that you may have installed are present after the initial setup.

You may use the “Recover CD” as bootable CD to start the Tablet PC in case it is not functioning.

In case of unsuccessful restoration or installation that may lead to loss of data; to prevent this, read the 2 cautions before using the “Recover CD”. Please refer to the documentation included in the CDs for more detailed information on using the “Recover CD”. ***If the tablet PC does not function, you can start the system using the “System Recover CD”; the CD is bootable.***



To prevent any loss of data, please back your files to your hard drive before re-installing the operating system using the “System Recover CD”.



In case there is a serious damage or an unsuccessful restoration or installation on your Tablet PC, use the “Recover CD” to prevent it only if the system is connected to a reliable external power or AC adapter or optional docking station or DC cable. We don't recommend you to use the “Recover CD” during a power failure or running on battery power or connected to an optional Auto/Air cable or Automobile Power adapter/charger.

During Restoration

- Do not interrupt the power on the tablet PC by unplugging or undocking the tablet PC.
- Do not shut down the tablet PC.

Using the Support CD

The Support CD contains the drivers and utilities necessary for the proper operation of the computer based what you need to install according to your choice of operating system.



Drivers and utilities from Support CD are already installed on your computer. Only use it to reinstall the software.

Driver	Operating System Support
<ul style="list-style-type: none">• VGA• Audio• A-Menu• Chipset Utility• Modem• Wireless LAN• Wireless Utility	<ul style="list-style-type: none">Windows XP Tablet PC EditionWindows XP Home EditionWindows XP Professional
<ul style="list-style-type: none">• Touchkit	<ul style="list-style-type: none">Windows XP Home EditionWindows XP Professional

Driver Installation

Drivers can be installed using the Auto Run installation.

- Use the step-by-step procedures to execute the “AutoRun” application by selecting “Driver Installation” on the CD disk that comes with your package



This section describes the operation and installation of drivers supplied on the Driver Utility CD-ROM that is shipped with your computer.

Installing VGA/Audio/A-Menu/Chipset Utility/Modem Drivers

Please follow the installation procedure to install driver and utilities.

- Insert the Support CD into your CD drive. Click “Start” and select “Run”.
- Type the following: **D:\Driver\VGA or Audio or A-Menu or Chipset Utility or Modem** (where D represents your CD drive).
- Click on “Setup.exe” to begin the Installation Wizard. Follow the Wizard’s on-screen instructions to complete the installation.
- Restart the system.

Installing the Wireless LAN Driver

Please follow the installation procedure as listed to install driver and utilities. Please follow these instructions to install the Wireless LAN driver:

- Insert the Support CD into your CD drive. Click “Start” and select “Run”.
- Type the following: **D:\Driver\Wireless** (where D represents your CD drive).
- Click on “SetupWLD.exe” to begin the Installation Wizard. Follow the Wizard’s on-screen instructions to complete the installation.
- Restart the system.

Installing the Wireless Utility

Please follow the installation procedure as listed to install driver and utilities.

- Insert the support CD into your CD drive. Click “Start” and select “Run”
- Type the following: **D:\Driver\Wireless Utility** (where D represents your CD drive).
- Click on “PROSet.exe” to begin the installation wizard. Follow the Wizard’s on-screen instructions to complete the installation.
- Restart the system.

Installing the TouchKit Driver

Please follow the installation procedure as listed to install driver and utilities.

- Insert the Support CD into your CD drive. Click “Start” and Select “Run”.
- Type the following: **D:\Driver\TouchKit** (where D represents your CD drive).
- Click on “Setup.exe” to begin the Installation Wizard. Follow the Wizard’s on-screen instructions to complete the installation.
- Restart the system.

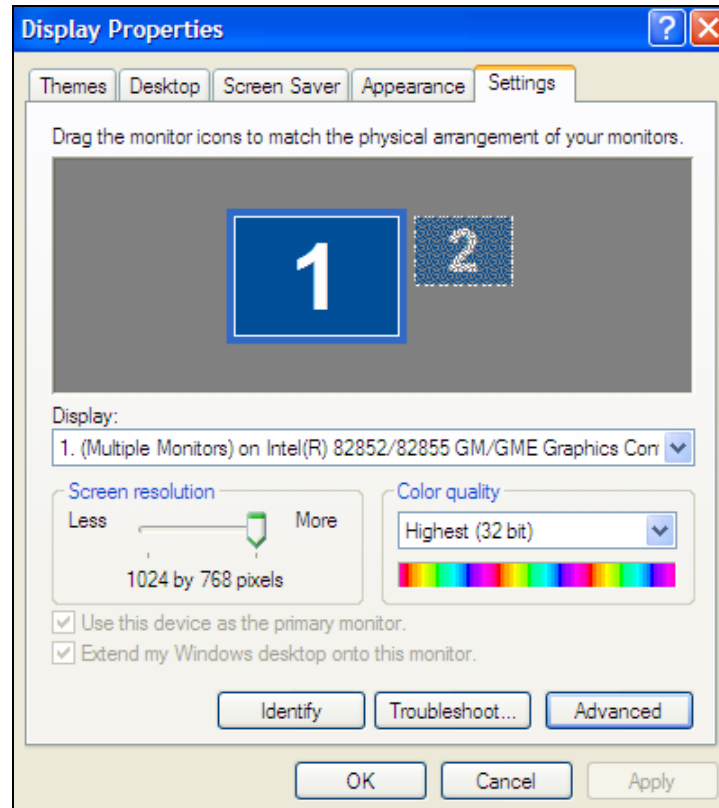
Utilities

This section describes the utilities essential to the operation with your computer.

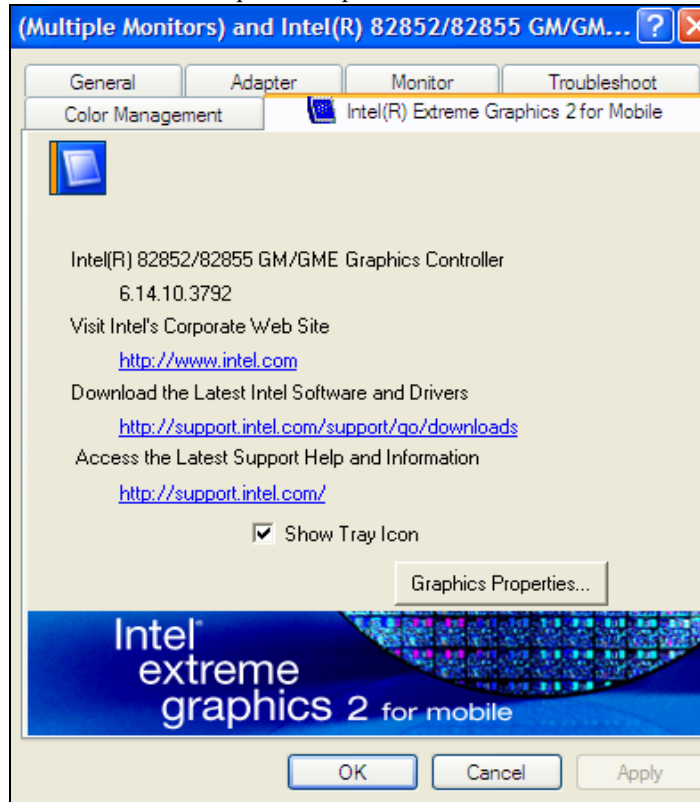
VGA Utility

After you have restarted Windows, open the “**Control Panel**” and double click on the “**Display**” icon.

From the “**Display Properties**” window, select the “**Settings**” tab and click on the “**Advanced**” tab to enter the "INTEL VGA Utility" window.

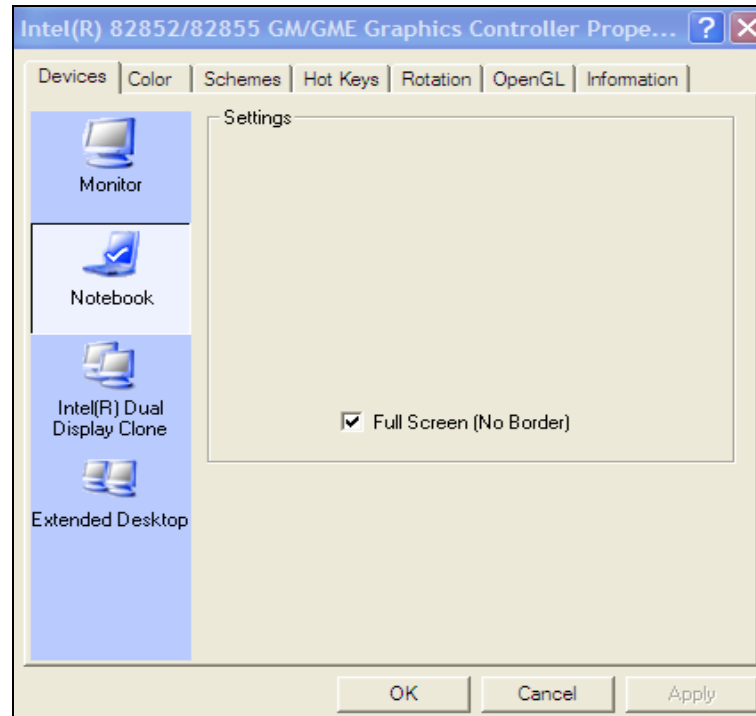


- Select “Intel® Extreme Graphics 2 for mobile”
- Click the “Graphics Properties”



Display Control

The VGA utilities allow four simultaneous outputs to Monitor (External), Notebook (Tablet PC), Dual Display Clone (External + Tablet PC) and Extended Desktop. Before proceeding, be sure the monitor is connected to the computer.



Type/State

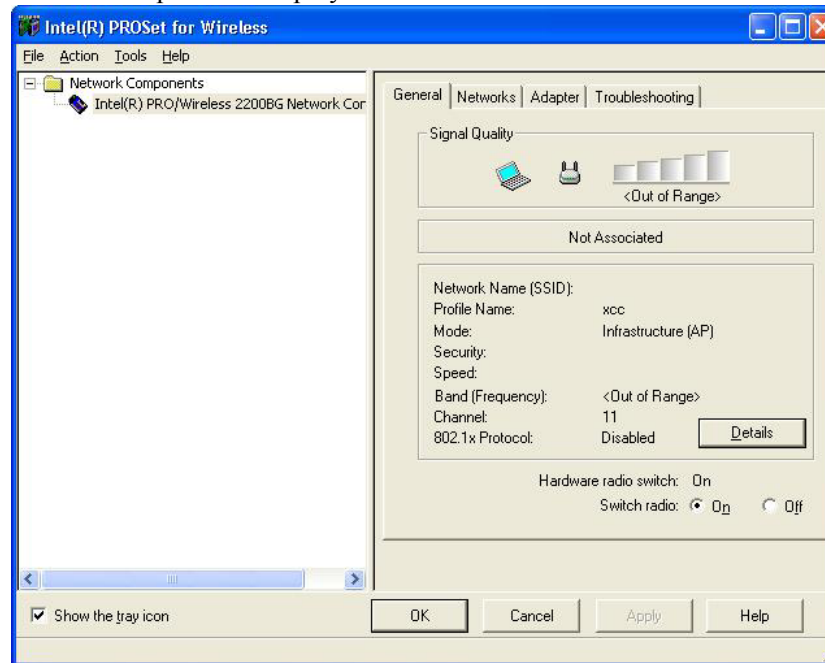
This applies to the display that you prefer to use.

- Select the "**Monitor**" if you want the picture to display only on the external monitor screen.
- Select "**Notebook**" if you want the picture to display only on the Tablet PC's screen.
- Select "**Intel® Dual Display Clone**" if you want the picture to display on both the Tablet PC and the external monitor.
- Select "**Extended Desktop**" if you want to extend your screen on the external monitor.

Wireless Utility

Intel(R) PROSet application for Wireless

After you have restarted Windows, open the “**Control Panel**” and double click on the “**Intel(R) PROSet for Wireless**” icon. The Intel(R) PROSet will search for the nearest access point within range of your wireless adapter and displays the current connection status.





For more detailed information on some question using the question of Intel(R) PROSet application; please refer to the online "Help".

Switching the Radio On/Off

The wireless adapter can be switched on and off from the optional hardware radio switch on your computer.

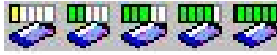


USER'S INFO

If you don't switch to the radio application, you will not be able to use "Intel® PROSet" application to link your system to "Internet" on windows operating system.

About hardware Radio on/off switch, please refer to "Getting to know Your Computer" in Chapter 2.

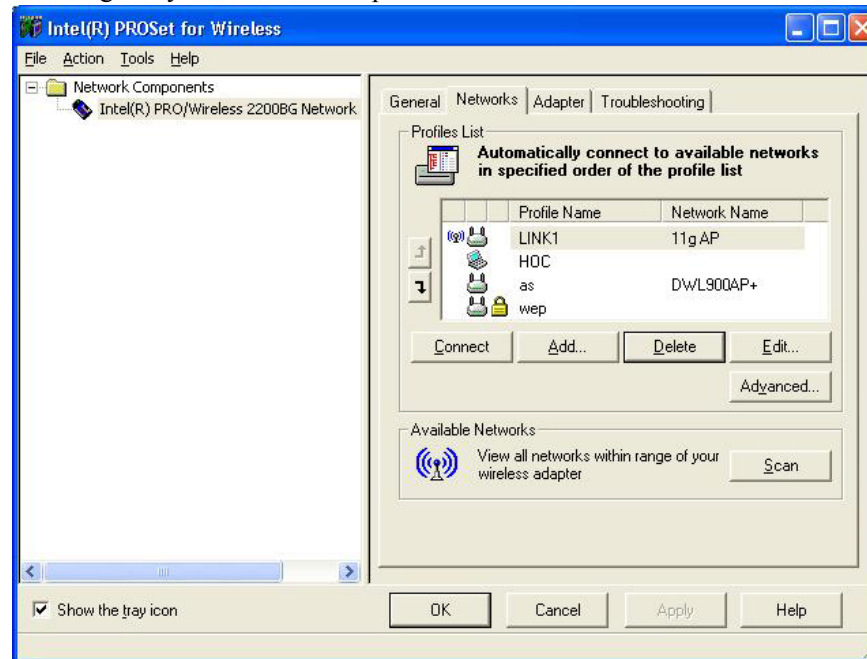
Intel(R) PROSet for Wireless Task Tray Icons

You can view the wireless status icons in the task tray to indicate the current signal strength of the wireless adapter. The signal strength status displays are: *Out of Range*, *Poor*, *Fair*, *Good*, *Very Good* or *Excellent*.

Icon	Description
	Adapter associated with an access point showing different signal strength status. As you can see on the illustration, the signal shows from the lowest to the highest.
	Adapter not associated with an access point.
	Radio turned off.





Networks Tap

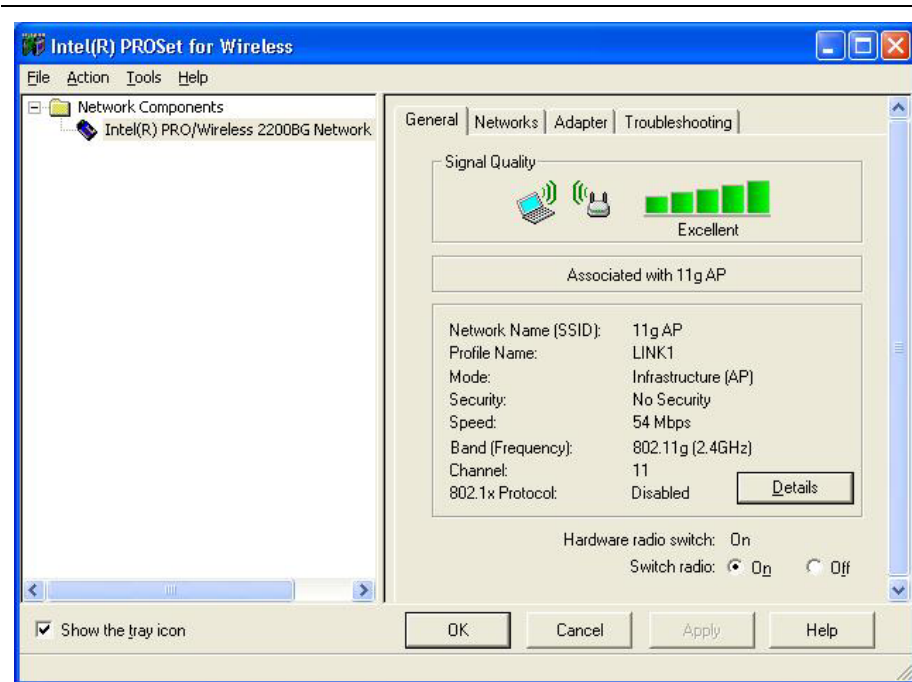
You can view the available WLAN profiles from this Network Tap. You can create, add, delete or edit an already existing profile. You can also click “Scan” button to search some available networks within range of your wireless adapter.



Profile List Icon

The network profile status icons indicate if the adapter is associated with a network, the type of operating mode being used, and if WEP encryption is enabled. These icons display next to the profile name in the profile list.

Icon		Description
	Blue circle	The wireless adapter is associated with an access point or computer (Ad hoc mode). If a profile has 802.1x settings enabled, this indicates that the adapter is associated and authenticated.
	Access point	Infrastructure operating mode.
	Computer	Ad hoc operating mode.
	Lock	The network is using WEP security encryption.



- Radio On - Activate the wireless adapter.
- Radio Off - Disable the wireless adapter.

Disable the Radio Application

There are two ways that you can disable the radio application on your computer.

Disable Radio Application through Hardware

Your computer has an optional external hardware radio on/off switch installed. You can use the switch to disable the radio off.

Disable Radio Application through Software

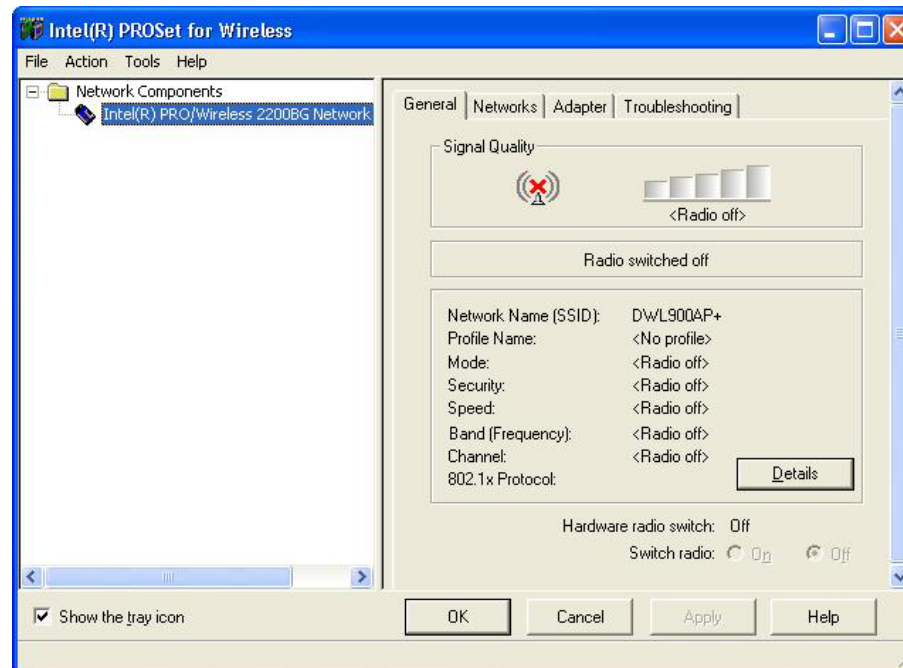
You can click “Switch radio: Off” option to disable the radio. You also can disable radio using Windows operating system Device Manger.

Please follow these instructions to disable the Radio:


- From your desktop, right-click My Computer and click Properties.
- Click the Hardware tab.
- Click the Device Manager button.
- Double-click Network adapters.
- Right-click the installed wireless adapter in use.
- Choose Disable from the pop-up menu.
- Click OK.

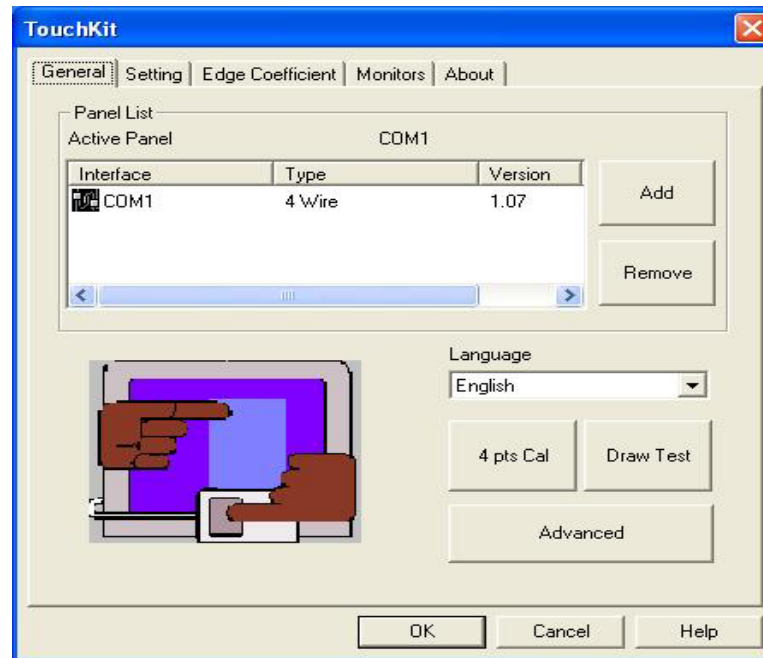


If you using external hardware radio on/off switch to disable radio, the software radio on/off switch select item will be disabled.



Touchkit Utility

After you have restarted Windows, select and double click the  “Touchkit” icon on the desktop. Touchkit utility provides some useful function for adjustment where you can easily manage all the controllers through the Touchkit utility.



 **NOTE**

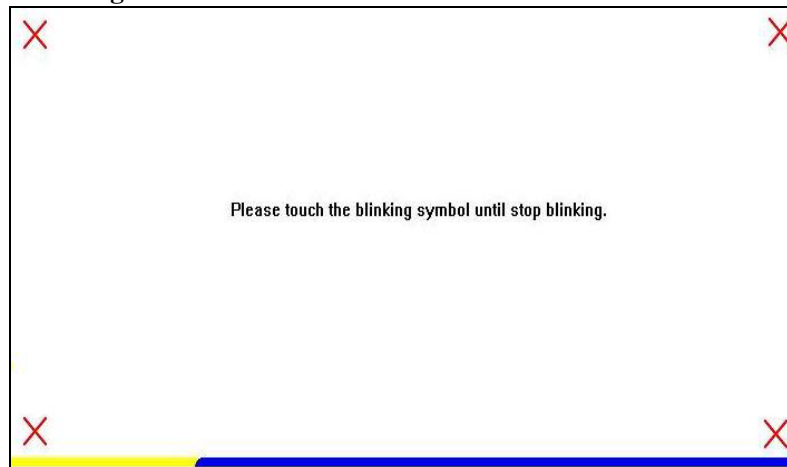
Some questions on how to use the Touchkit application; please refer to the online "Help" for detail.

Calibration

If your cursor pointer does not function well, you can select the "General" tap "4 pts Cal" button or "Advanced -> 25 pts Cal" button and click it to correct point locations.

➤ **4 pts cal**

Correct 4 point locations on the screen with the panel, screen displays as follows: **Touch the blinking symbol on panel until beep or stop blinking.**



➤ **25 pts cal**

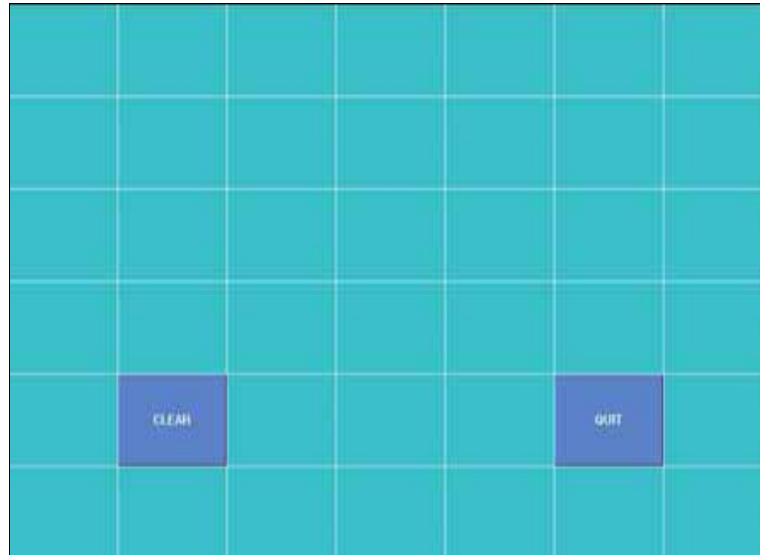
25 point calibration is more accurate for touch sensor. In general case, it does not need to do 25 points calibration other than bad linearity sensor.



➤ **Draw Test**

Test the drawing position related to the display screen on panel. There will be a squared blue display showing. In drawing test windows, user can click “**Clear**” button to clear the window. Also, click “**Quit**” button to quit from the drawing test.

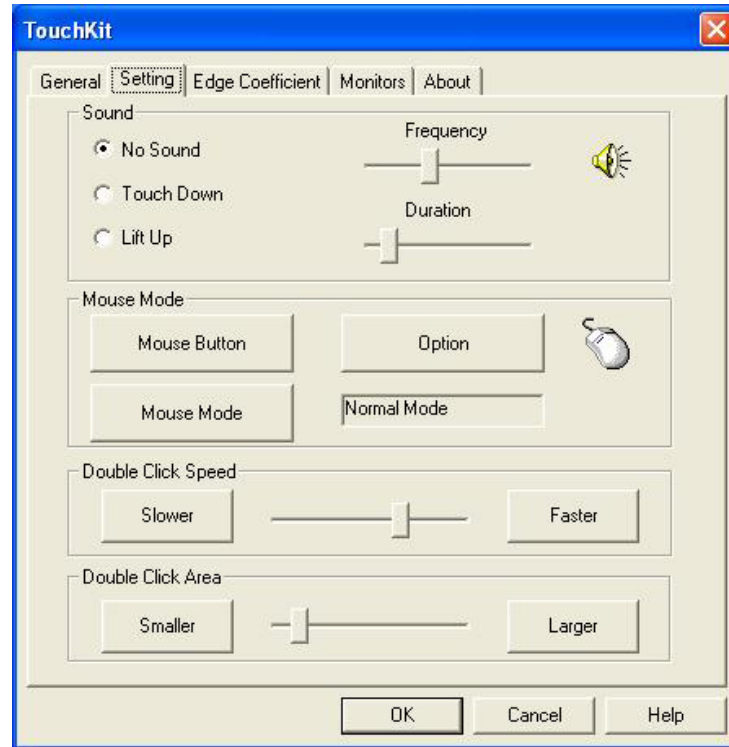
In drawing test windows, users can verify the panel linearity, calibration capability, and drawing line quality.



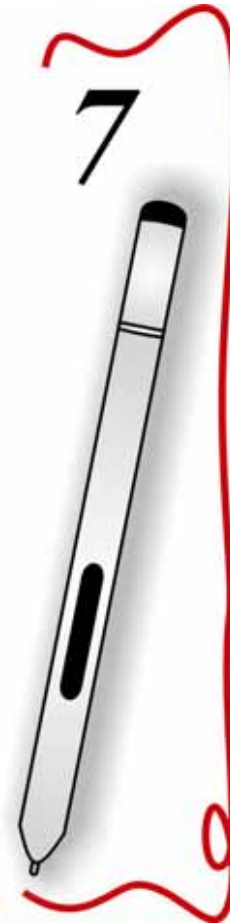
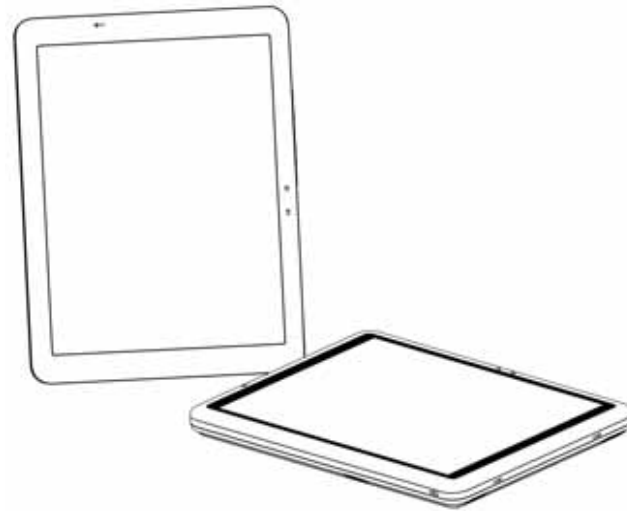
➤ **Setting**

There are three function groups – “**Sound Option**”, “**Mouse Mode**”, “**Double click Adjustment**” in this page.

Function	Description
Sound Option	Provide the click feedback while touching the panel.
Mouse Mode	Click it to show or hide TouchTray. Provide option for advanced mouse emulation setting.
Double click Adjustment	Provide user set up the tolerance while double clicking.



Troubleshooting



This chapter describes locating and solving problems that you may encounter while using your computer.

General Hardware Problems/Possible Cause and Solution

A few common hardware problems and suggested solutions are presented in the table below:

Antenna Problem/Solution

Problem	Possible Cause	Solution
The internal wireless local area network (LAN) is not functioning.	The antennas are obstructed	Try to prevent the antennas from being obstructed and be sure the computer access point is quite near you.

Audio Problems/Solutions

Problem	Possible Cause	Solution
No sound can be heard.	Either the volume is muted or turned down.	Use the Microsoft Windows volume control icon at the lower righthand corner of the display to adjust the volume.
No sound on the external speakers or headphones.	Connected to the wrong jack.	Change to the correct jack.

Battery Problems/Solutions

Problem	Possible Cause	Solution
Beeping sound.	The computer battery is low and Hibernation is disabled.	Connect the computer to an external power source immediately.
The battery pack is warm after charging.	This is a normal condition.	No action is required.
The battery LED indicator does not light when the battery is charging or if it is not charging.	No power is connected to the computer.	Check the power source.
	The battery is fully charged.	Refer to the battery icon located at the lower righthand corner of your screen if you are operating on battery.
	Battery pack was exposed to a high temperature.	Let the battery pack reach room temperature before use.
Battery charge gauge not accurately displaying the charge remaining	The battery pack is nearing the end of its life.	Replace the battery pack.
	Battery pack requires calibration.	Calibrate the battery pack.

Display Problem/Solution

Problem	Possible Cause	Solution
Rotation button is not functioning.	A-Menu software is not installed	Install A-Menu software using the support CD Driver.

Internet Problems/Solutions

Problem	Possible Cause	Solution
The computer is unable to connect to the Internet.	Account for Internet service provider (ISP) is not properly configured.	Ask for your ISP assistance.

Network Problem/Solution

Problem	Possible Cause	Solution
The system does not connect to the network	The settings are not correctly set.	Contact your network administrator.

Ordinary Pen Problems/Solutions

Problem	Possible Cause	Solution
The cursor is not functioning properly while using the ordinary pen.	Device was missing.	Executing the touchkit program then add the device COM1 again.
The cursor not in position while using the ordinary pen.	Computer settings not calibrated.	Change the settings in the touchkit settings window. Select TouchKit program>4 pts Cal to calibrated.

Power Problems/Solutions

Problem	Possible Cause	Solution
The computer is connected to an external power source but does not turn on even though the battery pack is connected.	The battery pack may be defective.	Replace the battery pack.
The Power/Standby light is off and the system turns off when it is left unattended.	The system initiated Hibernation mode	Press the Power button.
The system will not turn on after it turns off when left unattended.	The system initiated Hibernation because it is in critical low-battery condition.	Connect the computer to an external power source.

Screen Problem/Solutions

Problem	Possible Cause	Solution
The screen is blank.	Standby or Hibernate has initiated.	Exit Standby or Hibernate.
	External monitor display is selected	Switch to the computer. (Refer to "Software Utilities" section of Chapter 6.

USB Problem/Solutions

Problem	Possible Cause	Solution
The external device does not work when connected to the USB connector.	The external device is not receiving power.	Ensure that the external device is plugged into an electrical outlet.
	The external device is defective.	Try connecting the external device to another computer to determine if it operates properly.

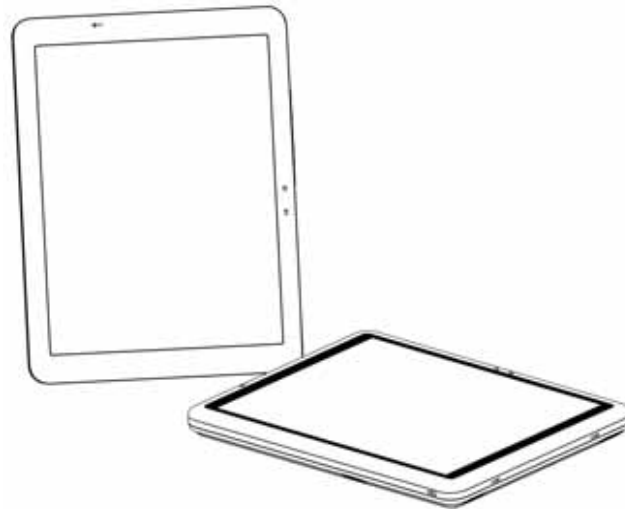
Contacting Your Dealer

If you still have a problem after reading the preceding section, the next step is to contact your dealer.

Your dealer can determine if the problem is something that requires the computer to be taken to the shop. Before you call your dealer, however, please have the following information available:

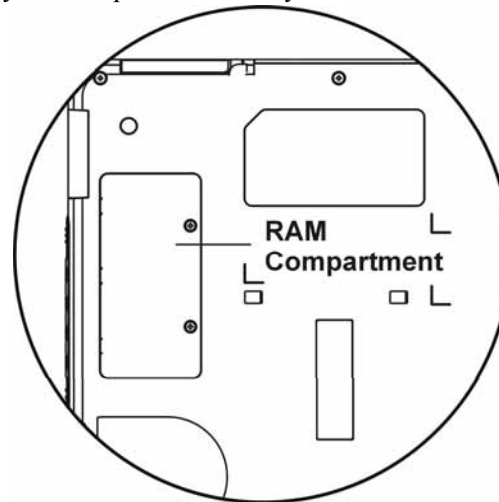
- How is your computer configured? Your dealer needs to know what peripheral devices you are using.
- What messages, if any, are on the screen?
- What software were you running at the time?
- What have you done already to try to solve the problem? If you have overlooked a step, your dealer may be able to solve the problem over the phone.

*How do I Expand my
Computer?*



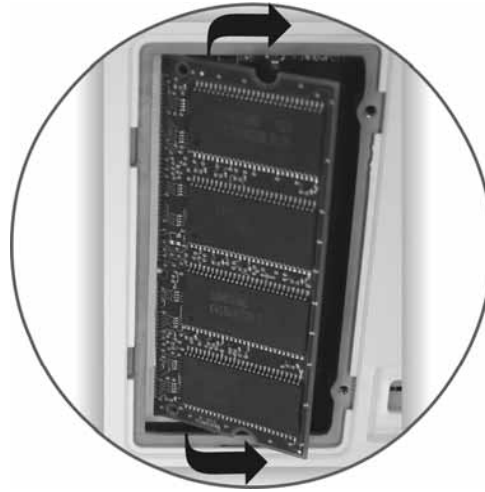
How to upgrade your RAM module

Refer to the following instructions and illustration for information on upgrading your computer's memory.



- Turn off your computer and turn it over.
- Locate the DDR-RAM module compartment in the center of the bottom panel of the system. Unscrew the two screws that secure the DDR-RAM module compartment cover.
- Remove the cover and set aside.
- Locate the DDR-RAM modules.
- Using your fingers or a small screwdriver, press the two plastic tabs on the sides of the DDR-RAM module away from the modules.

-
- The DDR-RAM module should pop out slightly.
 - Gently pull out the DDR-RAM module as shown on the illustration.
 - To replace the DDR-RAM module, align the DDR-RAM module connector with the DDR-RAM module socket and press the DDR-RAM module down until it clicks into place.
 - Once the module is properly seated, you can replace the cover on this compartment.
 - Replace and tighten the screws.



Easy to Upgrade HDD Module

Your computer provides you with a HDD that is easy to upgrade. Before installing a new drive, all the files in your system should be backed up.

How to upgrade your Hard Drive



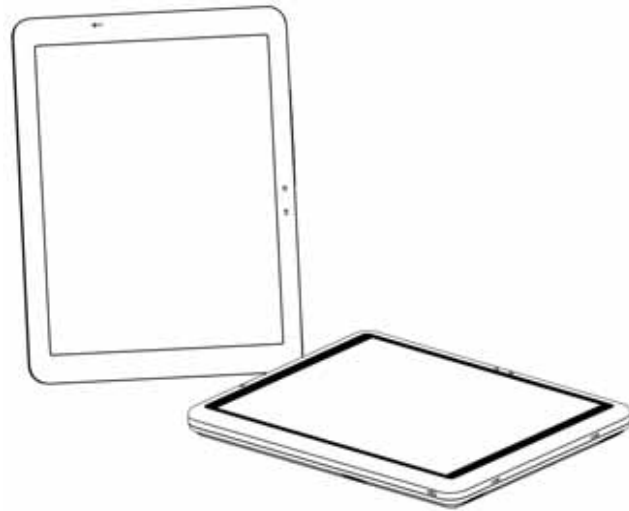
- Turn off your computer and turn it over, locate the battery compartment to remove the battery from your system. ***(Refer to the “Inserting and Removing the Battery Pack” section in Chapter 3.)***
- After you have removed the battery from your system, set it aside.
- Locate the HDD compartment right beside the battery compartment.
- Remove the screw that is secured with the HDD compartment.
- Hold the HDD release strip away from its compartment as shown on the illustration.

-
- Replace the HDD and insert it back into the compartment.
 - After the HDD is securely inserted, lock the compartment with the screw that you have removed earlier when you are removing the HDD.
 - Insert the battery back into the battery compartment.



Intentionally Left Blank

Specifications



Detailed Specifications

Features	Tablet PC
Processor	<ul style="list-style-type: none">• INTEL (Ultra) Low Voltage Mobile Pentium M or Dothan 900MHz up to 1.3GHz
Core Logic Chipset	<ul style="list-style-type: none">• North Bridge: Intel GMCH-M 855GM(E)• South Bridge: Intel ICH4-M
Cache	<ul style="list-style-type: none">• 1 MB L2 Cache (Pentium M) or 2 MB L2 Cache (Dothan)
System Memory	<ul style="list-style-type: none">• One DDR-SODIMM Support up to 1GB, User upgradeable
BIOS ROM	<ul style="list-style-type: none">• 512KB flash with boot block or above
Graphics Controller	<ul style="list-style-type: none">• Integrated on Intel GMCH-M 855GM(E)• Supports Dual Display Options
Audio	<ul style="list-style-type: none">• AC-97 Rev 2.3 Compliant• Two 1W Speakers
Input Device	<ul style="list-style-type: none">• Wacom/Digitizer• Touch Panel
Communication	<ul style="list-style-type: none">• Ethernet• Built In 10/100 Ethernet Port
Wireless LAN	<ul style="list-style-type: none">• Built In Intel Callexico 802.11b or 802.11b/g Wireless LAN• Single Band Antenna

Features	Tablet PC
Mass Storage	<ul style="list-style-type: none"> • 20/30/40/60GB HDD with support for larger capacity
Modem	<ul style="list-style-type: none"> • 2.5" size, 9.5" height, 5V • User Upgradeable
External Connectors	<ul style="list-style-type: none"> • MDC software Modem 56Kbps V.90 • DC-IN Jack • D-Sub15 External Monitor Out • CF card type I and type II with hot insertion and removal • RJ45/RJ11 Port • IEEE 1394 port • USB 2.0 Type A x2 • Headphones Out • Microphone In
User Controls	<ul style="list-style-type: none"> • Docking Station Interface • Power On/Off switch • SAS key • Menu key (Pop Up short cut Menu) • WWW key • Screen Rotation key • Wireless On/Off Switch • Jog Dial
User Indicators	<ul style="list-style-type: none"> • Power On / Suspend indicator • Battery State indicator • HDD Access indicator • Wireless On/Off indicator

Features	Tablet PC
Battery Pack	<ul style="list-style-type: none"> • 3S2P Lithium Ion Smart Battery (3.6AH@11.1V) 3.5 hours battery life, Weight:338g • Note: Battery life is tested by mobile mark2002 at LCD 97 nits.
AC Power Adapter	<ul style="list-style-type: none"> • 19VDC @ 60W LI SHIN:LSE0208A1960, DC19V, 3.16A • Worldwide EMI and Safety Approvals
Operating System	<ul style="list-style-type: none"> • Microsoft Windows XP Tablet PC Edition
Touch Panel	<ul style="list-style-type: none"> • Windows XP Home Edition/Professional
Optional Accessory	<ul style="list-style-type: none"> • External Charger